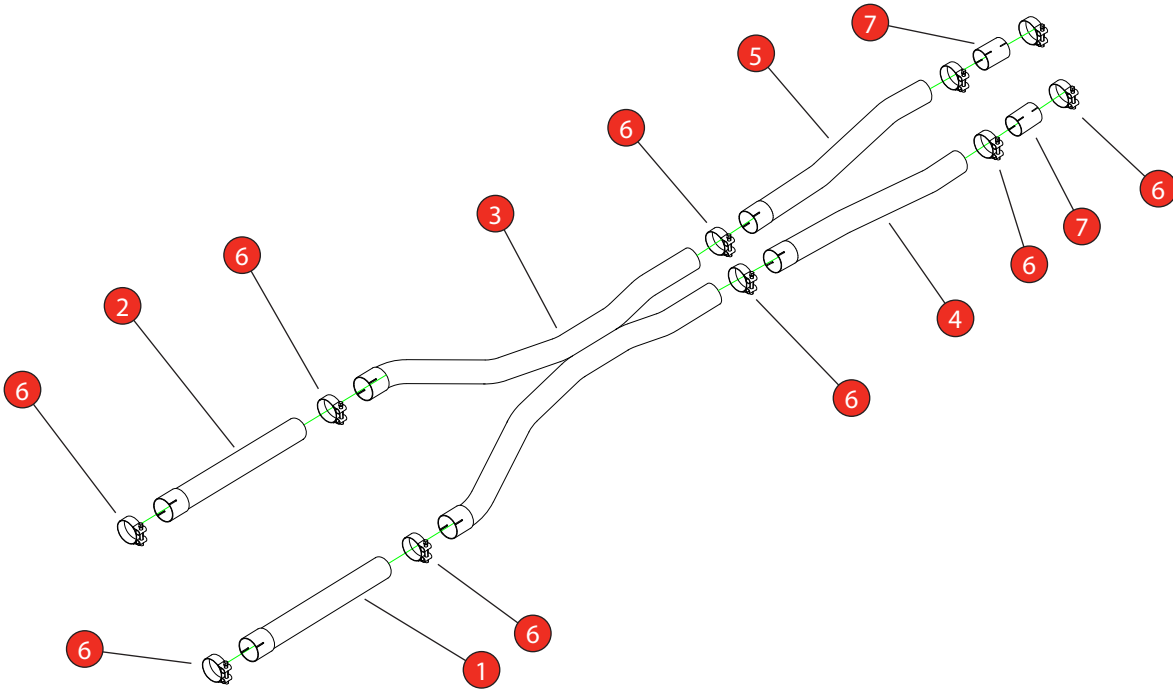


Car	BMW M5 F90 Pre & Post LCI, Incl Comp.	Part No.	SBMP114
Year	2017-2020	Fit Kits	520FK
Notes	Where not supplied use original fittings. Original system requires cutting, unless fitting with Scorpion GPF -Back.	Features	Pipe Diameter:- 80mm

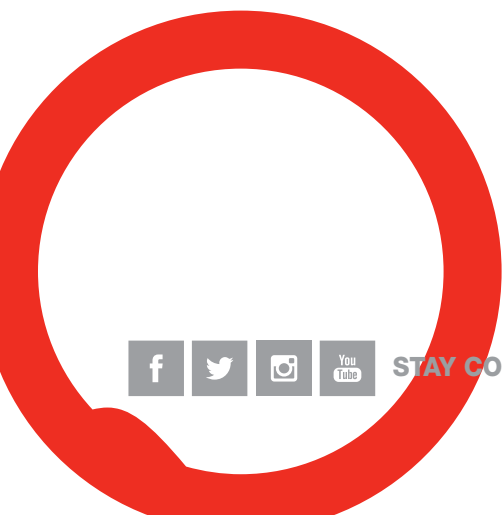
Estimated Fitting Time: 2 Hours



NO.	PART NO.	DESCRIPTION	QTY
1	1015BM	GPF Delete - L/H Front Pipe	1
2	1016BM	GPF Delete - R/H Front Pipe	1
3	1017BM	GPF Delete - X-Pipe	1
4	1018BM	GPF Delete - L/H Rear Link Pipe	1
5	1019BM	GPF Delete - R/H Rear Link Pipe	1
Fit Kit			
6	Z016.10069	79-85mm Clamp	10
7	AD129	Adaptor	2

CLASSIFICATION	Motorsport Use Only
HOMOLOGATED	No
DATE	14/10/2025
ISSUE	00
AUTHORISED	G O'Shea

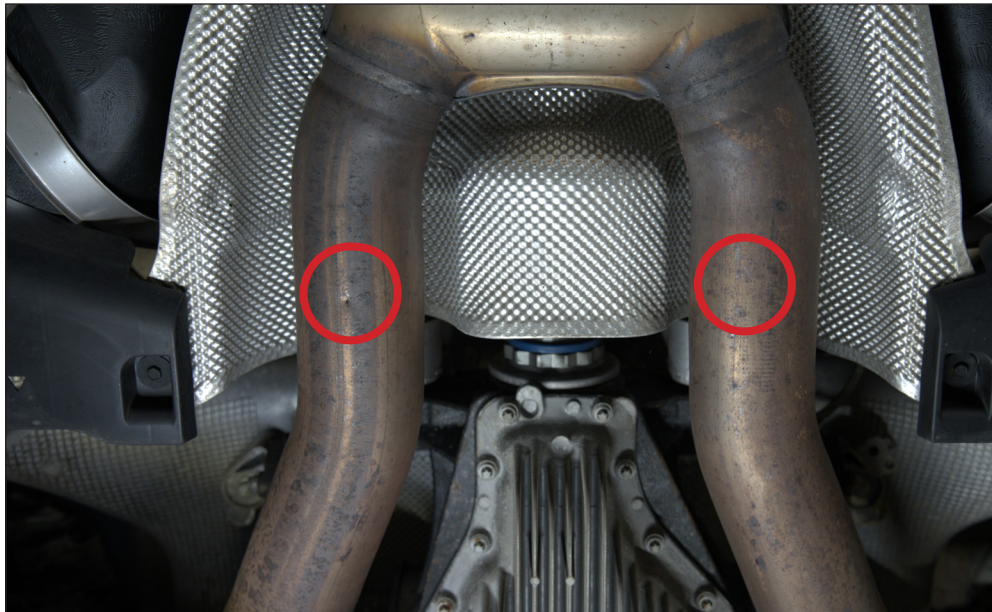
NOTE: ENSURE SCORPION SYSTEM IS CLEAR OF MOVING PARTS AND ALL ORIGINAL FUNCTIONS WORK CORRECTLY.



STAY CONNECTED TO RED POWER.

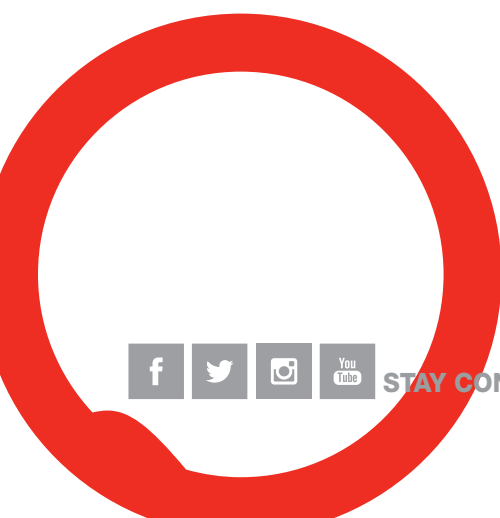
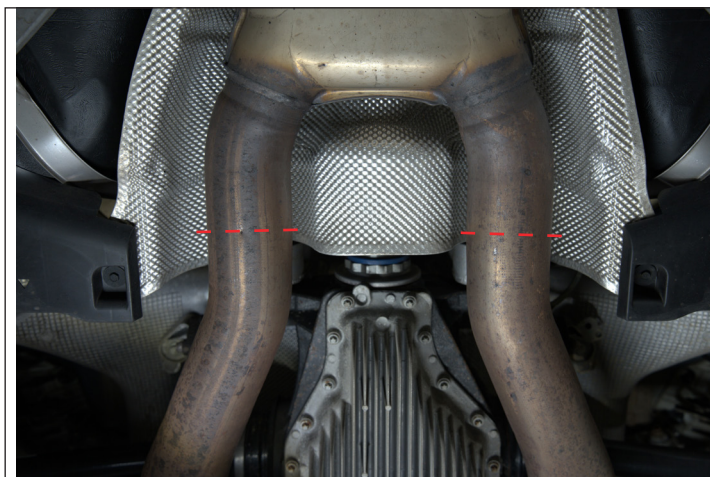
Car	BMW M5 F90 Pre & Post LCI, Incl Comp.	Part No.	SBMP114
Year	2017-2020	Fit Kits	520FK
Notes	Where not supplied use original fittings. Original system requires cutting, unless fitting with Scorpion GPF -Back.	Features	Pipe Diameter:- 80mm

Estimated Fitting Time: 2 Hours



Cutting Instructions:

The original system requires cutting in two places at the rear diff. (Unless fitting at the same time as the Scorpion GPF-Back). There is a dimple on each pipe, cut at that point and clean up the edges.



STAY CONNECTED TO RED POWER.